



Matt King Sixth Form Subjects

We belong at Stratton where every individual is known, valued, and supported.



Be Kind

Be Engaged

Be Ambitious

Our Courses

We have over 27 subjects on offer to support a range of interests and ability. Students can be confident that they will be successful regardless of chosen courses or options after 6th form.

There are many courses on offer to Matt King Sixth Form students. Typically, you will choose three of the following courses.

Applied Science	Food, Science & Nutrition	Sociology
Art & Design - Fine Art	Further Maths	Sport & Physical Activity
Art & Design - Photography	Geography	Enrichment
Biology	Health & Social Care	Enrichment Core Maths
Business	History	Enrichment Norwich City Football Club RDP
Chemistry	Mathematics	Enrichment EPQ
Computer Science	Media	
Drama & Theatre Studies	Music	
Economics	Physics	
English Literature & Language	Politics	
Environmental Science	Product Design	
Fashion & Textiles	Psychology	
Film	Religious Studies	

Faculty of Computing & Commerce

Head of Faculty: Mr Kilby

We offer:

Business
Computer Science
Economics



Business

BTEC Level 3 National Extended Certificate in Business

Studying business vocationally enables students to immerse themselves in the dynamic and ever-changing business environment. It is a practical course with assignments about real business, enabling you to gain a wide understanding of the purpose of different businesses, their structure and how they need to innovate to succeed.

You will get a chance to gain skills relating to, and an understanding of, how a marketing campaign is developed and design this campaign for assessment. You will be introduced to business through building knowledge of core business concepts and applying them. You will explore marketing, finance, operations management, the external environment, and many other topics.

Assessment

Year 12
Unit 3: Personal and Business Finance - (exam)
Unit 1: Exploring Business - (coursework)
Year 13
Unit 2: Developing a Marketing Campaign - (Controlled Assessment exam)
Unit 8: Recruitment and Selection - (coursework)



Computer Science

OCR A Level Computer Science

Computer Science is a practical subject where students can apply the academic principles learned in the classroom to real-world systems. It's an intensely creative subject that combines invention and excitement.

The Computer Science qualification values computational thinking, helping students to develop the skills to solve problems, design systems and understand the power and limits of human and machine intelligence.

Topics include:

- Contemporary processors, input, output and storage devices
- Software and software development.
- Exchanging data
- Data types, data structures and algorithms
- Legal, moral, cultural & ethical issues
- Elements of computational thinking
- Problem solving and programming
- Algorithms to solve problems

Assessment

Component 1 - Computer systems
2 hours and 30 minutes
written paper
40% of total A level
Component 2 - Algorithms and programming
2 hours and 30 minutes
written paper
40% of total A level
Programming project
Non-exam
assessment 20% of total A level



Economics

Pearson Edexcel GCE A Level Economics A

Economics looks at how we manage our country's resources to get the best quality of life possible for all groups of people in society.

We will look at individual markets, the UK economy, business decisions and the impact of the global economy and trading relationships.

Economics has never been more relevant than it is today!

We will cover 4 Themes over the 2 Year course:

Theme 1 - Introduction to markets and market failure

Theme 2 - The UK Economy – performance and policies

Theme 3 - Business behaviour and the labour market

Theme 4 - The global perspective

Assessment

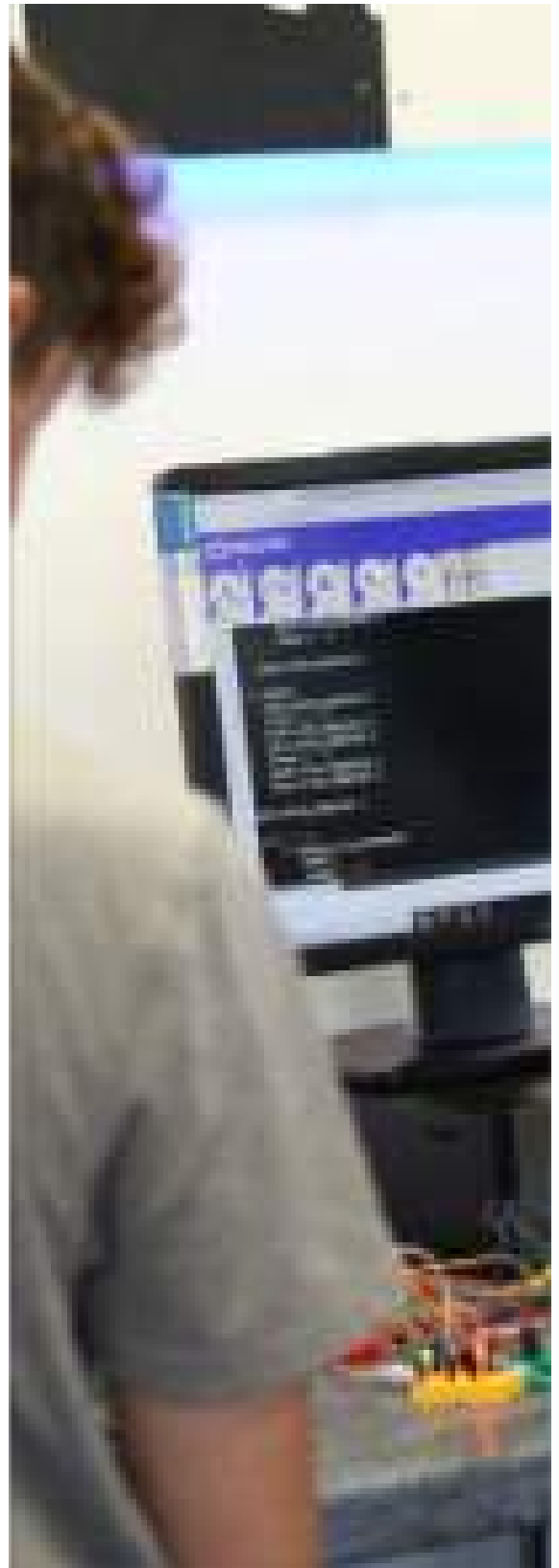
100% Exam with 3 Papers -
2 Hours

each

Paper 1 – Themes 1 and 3
(2 hrs)

Paper 2 – Themes 2 and 4
(2 hrs)

Paper 3 – All themes
(2 hrs)



Faculty of Creative Arts

Head of Faculty: Mrs C Lawson

We Offer:

Art & Design - Fine Art

Art & Design - Photography

Drama & Theatre

Music



Art & Design - Fine Art

Eduqas A Level Art and Design

Fine Art may be distinguishable by the emphasis it places on aesthetic and intellectual purposes rather than on practical, functional and utilitarian considerations.

This option covers a broad and developing area of study that includes painting, drawing, ceramics, sculpture, installation, performance and conceptual art and aspects of print-making, photography and film. It utilises traditional, new and emerging media and processes and involves expressive use of a particularly wide range of materials, techniques and skills.

The specification encourages creativity, sustained investigation and analysis, experimentation, and design and making as a means of developing technical and expressive skills. It gives learners the opportunity to follow a programme of study which extends experience and personal response as well as developing imagination and critical and reflective thinking.

Assessment

Personal Investigation – 60%

This will include a portfolio of work showing a personal response to a starting point, brief, scenario or stimulus. AND A related study: an extended response of a guided minimum of 1000-3000 words.

Externally Set Task – 40%

Provides students with a number of themes. Students produce a response based on one of these options.



Art & Design - Photography

Eduqas A Level Art and Design

This option covers a broad and changing area of study with light-based imagery spanning almost two centuries. Learners might engage with early light-based images and rudimentary technology, such as a pinhole camera, as well as the most contemporary, which may include the use of digital cameras, video camcorders, photocopiers, scanners and mobile phones. They may also work exclusively with film based or digital technology or with both. Outcomes can be screen or print based, comprise still or moving images and might be discrete to the subject area or combined with other art forms.

The specification encourages creativity, sustained investigation and analysis, experimentation, and design and making as a means of developing technical and expressive skills. It gives learners the opportunity to follow a programme of study which extends experience and personal response as well as developing imagination and critical and reflective thinking.

Assessment

Personal Investigation – 60%

This will include a portfolio of work showing a personal response to a starting point, brief, scenario or stimulus. AND A related study: an extended response of a guided minimum of 1000-3000 words.

Externally Set Task – 40%

Provides students with a number of themes. Students produce a response based on one of these options.





Drama & Theatre

Edexcel A Level Drama and Theatre

The Drama course is an exciting, engaging and creative subject which gives students opportunity to explore, analyse, create and perform dynamic theatre.

In lessons students will be expected to contribute to class discussion, practical exploration and written reflection, as well as conduct independent research, study and rehearsal.

The course is designed to prepare students for further education in drama and acting; providing students with the springboard to pursue a career in this field. However, the A level is widely recognised as an academic and valuable qualification and provides students with a wide range of skills: confidence, communication, independent research, devising, directing, performing, choreographing, evaluating, analysing and synthesising.

Assessment

Component 1; Devising 40% of the qualification

- Devise an original performance piece.

Component 2: Text in Performance 20% of the qualification

- A group performance/design realisation and a monologue or duologue performance/design realisation from different performance text.

Component 3: Theatre Makers in Practice

Written examination 40% of the qualification

Section A: Live Theatre Evaluation

Section B: Page to Stage:

Realising a Performance Text

Section C: Interpreting a Performance

Text





Music

AQA A-Level Music 7272

Students will engage critically and creatively with a wide range of music and musical contexts, and reflect on how music is used in the expression of personal and collective identities.

Appraising music - The areas of study provide an appropriate focus for students to appraise, develop and demonstrate an in-depth knowledge and understanding of musical elements, musical contexts and musical language.

Performance - perform music using one or both of the following ways:

- instrumental/vocal: as a soloist, and/or as part of an ensemble
 - production: via music technology.
- Composition** - learn how to develop musical ideas, including extending and manipulating musical ideas, and compose music that is musically convincing through two compositions.

Assessment

Component 1: Appraising music
Exam paper with listening and written questions (worth 40% of A-Level)

Component 2: Performance
(worth 35% of A-Level)

Component 3: Composition
Composition 1: Composition to a brief
Composition 2: Free composition
(worth 25% of A-Level)



Faculty of English & Languages

Head of Faculty: Mrs K Cash

We offer:

English Language & Literature
Media Studies
Film Studies



English

AQA A Level English Language and Literature

Our A Level English Language and Literature specification draws on the academic field of Stylistics in order to create an integrated English Language and Literature course which brings together literary and non-literary texts. Students will be encouraged to develop their creativity and critical skills during the course.

The study of English Language and Literature at A Level may lead to a wide range of careers and teach skills required for further study in higher education.



Assessment

Assessment is through both examinations and a non-examined assessment unit. Students will sit two papers which cover a range of different texts such as plays, poetry, articles and novels.

Paper 1: Written exam 3 hours

Paper 2: Written exam 2 hours 30

minutes Non-examined assessment:
assignment assessed by teachers



Media Studies

Eduqas Level 3 Media Studies

By choosing media studies you open yourself to develop new skills and abilities to fit any career in the modern world. Learn to question opinion and find the truth; challenge stereotypes, change minds and equip yourself with the ability to create advanced media products, worthy of professional exhibition.

The A-Level is divided into 3 'Components'. All of the units have been developed with a range of different skills and theory. These will be the types of skills you could potentially gain employment with.

The media industry in the UK will be worth £80.5 billion in 2023. It is the fastest growing industry in Europe (PWC, 2019).

Assessment

Units will be assessed as follows:

Component 1: Media Products, Industries and Audiences

(written exam) = 35%

Component 2: Media Forms and Products in Depth

(written exam) = 35%

Component 3: Cross-Media

Production (coursework) = 30%.



Film Studies

Eduqas A Level Film Studies

Film is one of the main cultural innovations of the 20th century and a major art form of the last hundred years. Those who study it characteristically bring with them a high degree of enthusiasm and excitement for what is a powerful and culturally significant medium, inspiring a range of responses from the emotional to the reflective. Film Studies consequently makes an important contribution to the curriculum, offering the opportunity to investigate how film works both as a medium of representation and as an aesthetic medium.

The A level in Film Studies aims to enable learners to demonstrate knowledge and understanding of; a diverse range of film, the significance of film, film and its key contexts, how films generate meanings and responses, film as an aesthetic medium and the different ways in which spectators respond to film.

Assessment

Students will get the opportunity to write their own scripts and make their own short film for their NEA.

Students will be assessed by two exams totalling 70% of the final grade and an NEA unit totalling 30% of the final grade.



Faculty of Humanities

Head of Faculty: Mrs K Doig

We offer:

Environmental Science
Religious Studies
Geography
History
Politics
Psychology
Sociology



Environmental Science

AQA A-Level Environmental Science

Environmental science is a multidisciplinary course that explores the interactions and interdependence between the components that make up our planet. Some of the key themes covered include the bio-physical environment, resources, pollution, circular economy and sustainability. Real-life case studies are used to support underpinning theory and make it more relevant to what is happening currently around you and our planet.

Paper 1 Topics: The Physical Environment, Energy Resources, Pollution and Research Methods.

Paper 2 Topics: The Living Environment, Biological Resources, Sustainability and Research Methods.

Assessment

This is linear assessed course comprising of two written exams taken at the end of year 2.

Both papers are 3 hours and worth 120 marks which equates to 50% of the overall A-level respectfully.

The questions in each exam comprises of multiple choices, short and extended writing style questions.



Religious Studies

Pearson Edexcel A Level Religious Studies

Fascinating and enlightening, A-level Religious Studies is an excellent choice for students wishing to develop a deeper knowledge and understanding of world religions, philosophy and ethics but you will also gain many valuable transferable skills along the way. The A-level syllabus combines the in-depth study of the Philosophy of Religion and Ethics with the study of a major world religion and the development of thought within it. In the Philosophy of Religion and Ethics section, areas of study include the application of ethical theories to contemporary issues. The philosophical element looks at a variety of fascinating topics, including the nature of the mind, body and soul, arguments for and against the existence of God, and the problem of evil.

Assessment

Across the two years you will study three papers which will be assessed at the end of Year 13 via external exams. Each paper is 2 hours in length.

Paper 1: Philosophy of Religion

Paper 2: Religion and Ethics

Paper 3: Study of ONE Religion



Geography

AQA A Level Geography

Geography is one of the few subjects that lets you develop a variety of core skills that are vital for a successful career in the modern world.

It is also considered a facilitating subject and recommended by the Russell Group Universities.

Geography helps you to be more aware of the everyday life and problems of the people who live around you, in other parts of Britain and across the world. Statistics show that compared to other subjects Geography graduates are among the most employable. This is because they possess the skills that employers look for. In part, this is because the subject is a combination of the facts of science and the understanding of the arts.

Assessment

Year 13

Component 1 - Physical geography - 2 hr 30 min exam, 96 marks - 40%

Component 2 - Human geography - 2 hr 30 min exam, 96 marks - 40%

Component 3 - Geographical Investigation - 3000-4000 word individual investigation based on fieldwork, 35 marks - 20% of final A level, marked by teachers and moderated by AQA.



History

Pearson Edexcel Level 3 Advanced Level GCE

A Level History at Stratton is a popular subject which is highly recommended by Russell Group Universities. The course offers a range of topics from 20th Century Germany to Tudor England. The course is taught by passionate teachers who believe in active learning both in school and outside the classroom.

The A level History course encourages students to think analytically, explore debates using evidence and make historical links. Students who study History go on to read History at University or branch into Law, Criminology or the civil service for example.

Assessment

Students will sit their final exams in the summer of year 13.
3 Exams: 80%
Coursework: 20%
A Level Unit 1G: Germany and West Germany 1918-89.
A Level Unit 2G: Spain 1930-78
A Level Unit 3: Rebellion and Disorder under the Tudors (1485-1603)
A Level Unit 4: Historical Enquiry (Coursework)



Politics

AQA GCE A Level Politics

Lively, relevant, controversial... there are many ways to describe A-level Politics. There's no denying that it's one of the most interesting and engaging qualifications you can choose.

Covering news and current affairs from the UK and US, it helps you understand how the UK country is run and develops research, written communication and debate skills. It also helps grow your confidence.

It's ideal if you're considering studying politics, sociology, ethics, advertising or journalism at university and is highly regarded by employers in industries including politics, international organisations, the media, government and the civil service.

Unit 1 Government of the UK
Unit 2 Government and politics of the USA and comparative politics.
Unit 3 Political Ideas

Assessment

Paper 1 – Government of the UK
Written exam 2 hours, 33% of A Level
Questions – A mixture of medium length explain and essay style questions.
Paper 2 - The government and politics of the USA and comparative politics
Written exam 2 hours, 33% of A Level
Questions – A mixture of medium length explain and essay style questions.
Paper 3 - Political ideas
Written exam 2 hours, 33% of A Level
Questions – A mixture of medium length explain and essay style questions



Psychology

AQA A Level Psychology

Psychology allows you to examine and uncover why individuals behave in the ways that they do. A variety of human behaviours are looked at in depth include memory and phobias. As a subject it is recognised as relating to Biological science at one extreme and Sociology at the other. A key component of Psychology is to critically think about how human behaviour works. As well as evaluate explanations that have been formed and studies that have been designed to test these behaviours. Throughout your studies you will develop an ability to analyse data and scientific enquiries. Psychology is an academic discipline that works in combination with Sociology as well as subjects from the sciences and humanities.

Assessment

The course comprises 8 compulsory and 3 option topics across three exams. 33.3% each, 120 minutes each.

Exam 1: Social Influence, Memory, Attachment and Psychopathology Exam 2: Approaches in Psychology, Biopsychology and Research Methods Exam 3: Issues and Debates and three option topics



Sociology

AQA A Level Sociology

Sociology aims to deepen a student's awareness of the world in which we live and our place within it. It gives an understanding of the social institutions such as families, education and the judicial system as well as social processes such as socialisation and discrimination that influence behaviour and operate within society. Sociology can be thought provoking as it gives students the opportunity to challenge their personal views and assumptions. This subject focuses on the issues faced by contemporary Britain such as crime, the role of the mass media and inequality. Students will become analytical and critical of the world around them and the theories that aim to explain society. Power and stratification are core themes that are interwoven throughout the course.

Assessment

Units are assessed across three exam papers. Largely an essay based exam style, using sources and statistics to compliment knowledge of studies and key sociological thinkers.

Paper 1: Education with Theory and Methods Paper 2: Families and Households and Beliefs Paper 3: Crime and Deviance with Theory and Methods

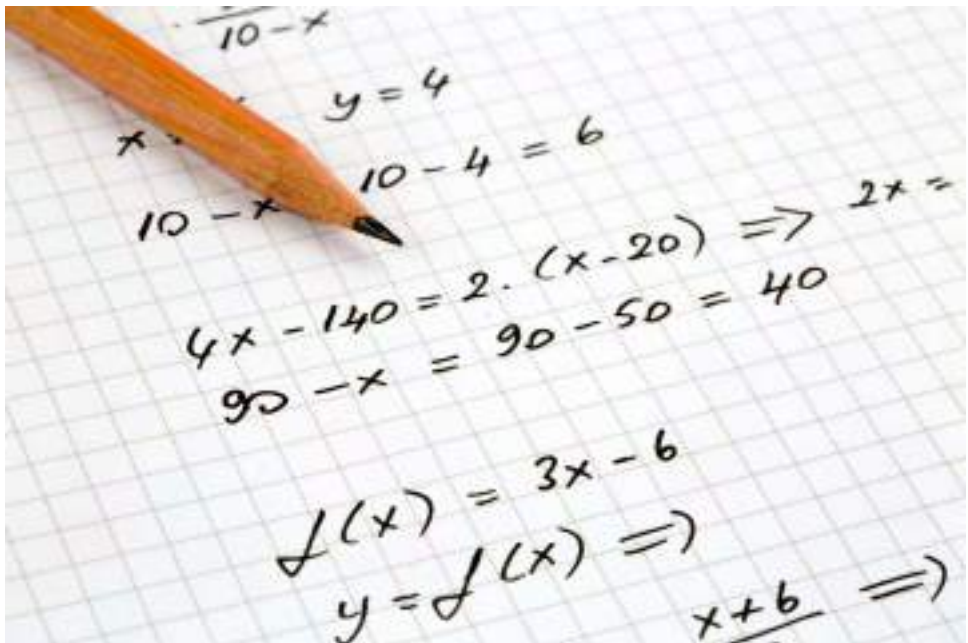


Faculty of Maths

Head of Faculty: Mr M Keating

We offer:

Mathematics
Further
Mathematics



Mathematics

Edexcel A Level Mathematics

A Level Mathematics provides students with a thorough grounding in essential tools and techniques needed in both the workplace and Higher Education. The logic and reasoning skills developed by studying A Level Mathematics make sure the qualification is widely respected even in non-mathematical arenas, this leads to A Level Mathematics being one of the most highly demanded facilitating subjects for university. In addition our students enjoy the challenge and logic of the course, together with the sense of excitement and satisfaction achieved when reaching the solution to a problem.

In addition to Pure Mathematics students will study Statistics and Mechanics.

Further Maths

Edexcel A Level Further Mathematics

Further Mathematics A Level is aimed at those who are the most mathematically able. Students considering Further Mathematics must also take Mathematics A Level, therefore half of your timetable will be spent working on Maths. This requires tremendous commitment and motivation, but brings also a high level of reward. Further Mathematics is usually taken by students considering university course with a large proportion of Maths in them; such as Mathematics, Physics, and Engineering etc. Entry requirements on Mathematics degrees are often lowered for those who have Further Mathematics in addition Mathematics A Level.

Assessment

Examinations: All external examinations are sat at the end of year 13.

3 Exams.

Paper 1 (Pure Mathematics 1) 2 hours,

Paper 2 (Pure Mathematics 2) 2 hours,

Paper 3 (Statistics & Mechanics) 2 hours.

Assessment

Exams at the end of year 13.

Paper 1 and paper 2 (1hr 30 each) assesses content from: Proof, Complex numbers, Matrices, Further algebra and functions, Calculus, Vectors, Polar coordinates, Hyperbolic functions and Differential equations.

There are two further 1hr 30 papers (paper 3 and paper 4) which cover Further Statistics and Further Mechanics.



Faculty of Physical Education

Head of Faculty: Mr K Jones

We offer:

Sport & Physical Activity (Extended Certificate)

Sport & Physical Activity (Diploma)



Sport & Physical Activity

OCR Cambridge Technical Level 3 Extended Certificate

(1 A Level)

This course will develop your knowledge, understanding and skills of the essentials of exercise and physical activity. You will also gain an insight into the Sport and Physical Activity industry.

The course contains centre assessed units with practical and wider project-based assessment opportunities, as well as examined units on the impacts of sport and physical activity on health and well being and how to select appropriate sports and activities for different participants. Internal assessments can be in the form of practical sessions, written assignments or presentations to name a few. This course will prepare you for either life in the Sport sector or further university study. This course can run as part of the Norwich City FC Regional Development Programme.

Sport & Physical Activity

OCR Cambridge Technical Level 3 Diploma

(2 A Levels)

This course will develop your knowledge, understanding and skills of the essentials of exercise and physical activity. You will also gain an insight into the Sport and Physical Activity industry. The course contains centre assessed units with practical and wider project-based assessment opportunities, as well as examined units on the impacts of sport and physical activity on health and well being and how to select appropriate sports and activities for different participants. Internal assessments can be in the form of practical sessions, written assignments or presentations to name a few.

This course will prepare you for either life in the Sport sector or further university study.

This course can run as part of the Norwich City FC Regional Development Programme.

Assessment

Unit 1 – Body Systems and the Effects of Physical Activity

Unit 2 – Sports Coaching and Activity Leadership

Unit 3 – Sports Organisation and Development

and 2 Optional Units



Assessment

Unit 1 – Body Systems

Unit 2 – Sports Coaching

Unit 3 – Sports Organisation

Unit 4 – Working Safely in Sport

Unit 6 – Group Exercise to Music

Unit 7 – Improving Fitness

Unit 8 – Physical Activity for Specific Groups

Unit 13 – Health and Fitness Testing

and 2 Optional Units

Faculty of Science & Technology

Head of Faculty: Miss C Allen

We offer:

- Applied Science
- Biology
- Chemistry
- Fashion & Textiles
- Food Science & Nutrition
- Product Design
- Physics



Applied Science

Pearson AAQ BTEC National Applied Science

New for September 2025!

ABTEC Nationals are widely recognised by higher education and industry as the vocational qualification of choice at Level 3. They provide students with meaningful and practical learning experiences across a range of career sectors to prepare them to progress to higher education as a route to graduate-level employment. The course offers a student-centred approach to the curriculum, with a flexible, unit-based structure and knowledge applied through a balanced combination of assignments and examinations.

Unit 1 - Principles and Applications of Biology

Unit 2 - Principles and Applications of Chemistry

Unit 3 - Principles and Applications of Physics

Unit 4 - Practical Scientific Procedures and Techniques

Unit 5 - Science Investigation Skills

You will gain a number of transferrable skills such as Time Management, Interpersonal and problem solving leading to a wide range of further education courses and apprenticeships such as Sport Exercise, Nursing and Educational studies.

Assessment

50% Internally assessed Unit 4 and 5.

50% External Examinations Unit 1,2 and 3.



Biology

AQA A Level Biology

Studying biology will enable you to appreciate the complexity of the living world ranging from whole ecosystems right down to the molecules that form life itself. It is an intellectually demanding, yet, rewarding subject.

Content is split into 8 teaching modules:

Module 1 - Biological molecules

Module 2 - Cells

Module 3 - Organisms exchange substances with their environment

Module 4 - Genetic information, variation and relationships between organisms

Module 5 - Energy transfers in and between organisms

Module 6 - Organisms respond to changes in their internal and external environments

Module 7 - Genetics, populations, evolution and ecosystems

Module 8 - The control of gene expression

Assessment

For A2, three exams at the end of Year 13:

For A2, three exams at the end of Year 13:

Paper 1 Modules 1-4

(2 hr, 35%)

Paper 2 Module 5-8

(2hr, 35%)

Paper 3 All Modules

(2hr, 30%)

Practical Endorsement completed in lessons.



Chemistry

OCR A Level Chemistry

Content is split into six teaching modules: Module 1 – Development of practical skills in chemistry

Module 2 – Foundations in chemistry

Module 3 – Periodic table and energy

Module 4 – Core organic chemistry

Module 5 – Physical chemistry

and transition elements

Module 6 – Organic chemistry and analysis

The A Level Chemistry course will prepare learners for progression to undergraduate courses in Chemistry, Biochemistry, Medicine, Dentistry, Engineering, Pharmacy, one of the other sciences or related subjects.

For learners wishing to follow an apprenticeship route or those seeking direct entry into chemical science careers, this A level provides a strong background and progression pathway.

Assessment

For A2, three exams at the end of Year 2:

Periodic table, elements and physical chemistry:

(2h 15m;

37%)

Synthesis and analytical techniques: (2h 15m; 37%)

Unified Chemistry:

(1h 30m;

26%)



Food Science & Nutrition

WJEC Level 3 Diploma in Food Science and Nutrition

The Level 3 Food Science and Nutrition qualification allows students to gain a wealth of knowledge about the food and nutrition industry. Students will have the opportunity to learn about the relationship between the human body and food as well as practical skills for cooking and preparing food.

The WJEC Level 3 Diploma in Food Science and Nutrition is made up of four units.

- Unit 1: Meeting the Nutritional Needs of Specific Groups (mandatory)
- Unit 2: Ensuring food is safe to eat (Mandatory)
- Unit 3: Experimenting to Solve Food Production
- Unit 4: Current issues in Food Science and Nutrition

Design & Technology

AQA A Level Design & Technology: Product Design

This creative and thought-provoking qualification gives students the practical skills, theoretical knowledge and confidence to succeed in a number of careers. Especially those in the creative industries.

They will investigate historical, social, cultural, environmental and economic influences on design and technology, whilst enjoying opportunities to put their learning in to practice by producing prototypes of their choice.

Students will gain a real understanding of what it means to be a designer, alongside the knowledge and skills sought by higher education and employers.

Assessment

- Year 12
- Unit 3: Personal and Business Finance - (exam)
- Unit 1: Exploring Business - (coursework)
- Year 13
- Unit 2: Developing a Marketing Campaign - (Controlled Assessment exam)
- Unit 8: Recruitment and Selection - (coursework)

Assessment

- Paper 1 – Technical principals – 30%
- Paper 2 – Designing and making principals – 20%
- NEA – substantial design and make project 50%



Fashion & Textiles

AQA Design & Technology

AAQA A level Fashion and Textiles

The world of fashion is a trillion-pound industry that employs over 800,000 people in the UK. Textiles is linked to the world of design, manufacturing, business and marketing. You will combine creative and technological principles to create marketable and innovative garments. The course includes the study of consumer trends, textile products and materials, construction processes and surface decoration techniques as well as wider issues in the industry. This creative and thought-provoking qualification gives students the practical skills, theoretical knowledge and confidence to succeed in a number of careers. They will investigate historical, social, cultural, environmental and economic influences on design and technology, whilst enjoying opportunities to put their learning in to practice by producing prototypes of their choice. Students will gain a real understanding of what it means to be a designer, alongside the knowledge and skills sought by higher education and employers. The new qualifications place greater emphasis on understanding and applying iterative design processes. Whilst the course will naturally appeal to those wishing to pursue a career in the creative industries, many of the skills required are transferable and compliment a wide range of subjects.



Assessment

A2 exam papers and a Non Examined assessment (NEA).

The exams and non-exam assessment will measure how students have achieved the following assessment objectives.

- AO1: Identify, investigate and outline design possibilities to address needs and wants.
- AO2: Design and make prototypes that are fit for purpose.
- AO3: Analyse and evaluate: design decisions and outcomes, including for prototypes made by themselves and others wider issues in design and technology.
- AO4: Demonstrate and apply knowledge and understanding of:
 - technical principles
 - designing and making principles.



Physics

OCR A Level Physics A

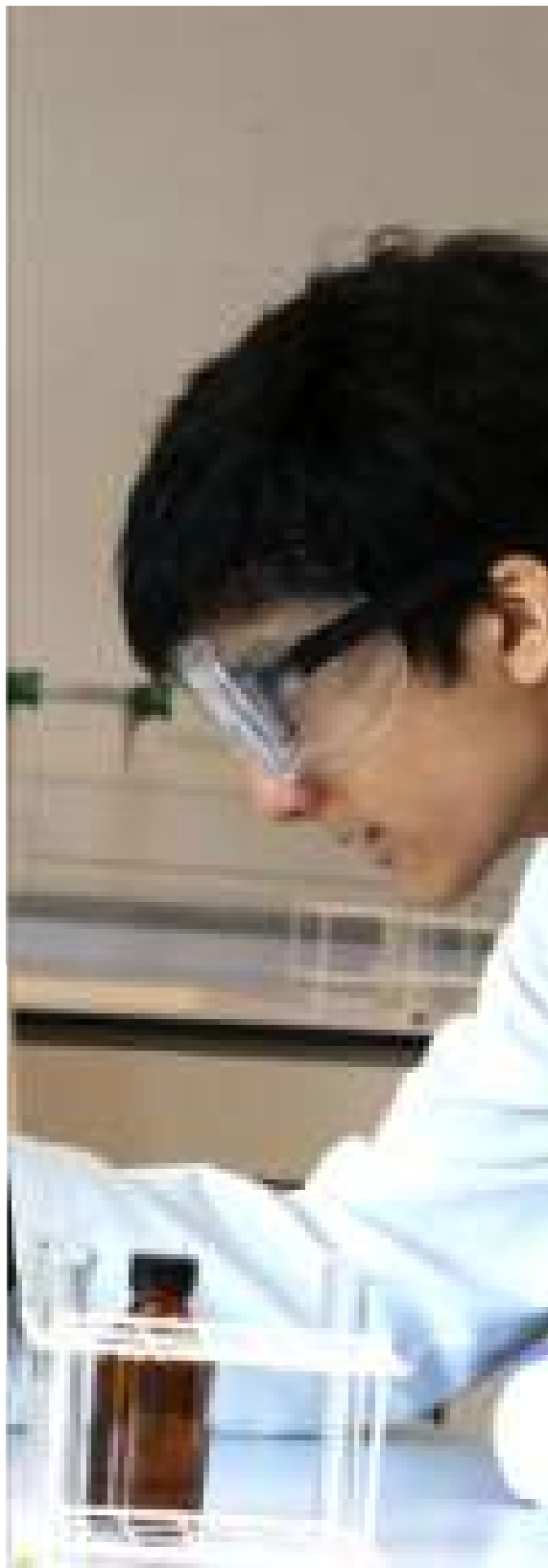
Physics is the fascinating study of how the Universe works on a fundamental scale. It requires an inquisitive mind and in return rewards you with a deeper understanding of how the world functions. From the forces experienced on a daily basis to the enigmatic quarks and photons that make up the microscopic Universe, via black holes, nuclear fusion and the physics of your television! The subject matter offers endless opportunities for learning.

Topics Include: Motion, Forces in action, Work, energy and power, Materials, Momentum, Charge and current, Electrical circuits, Waves, Quantum physics, Thermal physics, Circular motion, Oscillations, Gravitational fields, Astrophysics and cosmology, Capacitors, Electromagnetism, Nuclear and particle physics, Medical imaging.

Assessment

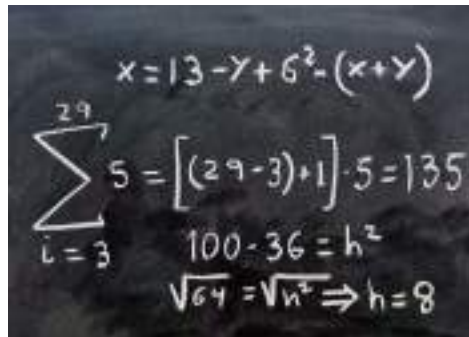
A Level is assessed in three examinations:
Total of 6 hours of examinations
Modelling Physics (2hrs 15min)
Exploring Physics (2hrs 15min)
Unifying Physics (1hr 30min)

A wide range of questions types which include multiple choice, short answer and extended response questions.



Enrichment Subjects

EPQ Core Maths NRDP



The image shows a chalkboard with three mathematical equations written in white chalk. The top equation is $x = 13 - y + 6^2 - (x + y)$. The middle equation is a summation: $\sum_{l=3}^{29} 5 = [(29-3)+1] \cdot 5 = 135$. The bottom equation is a derivation: $100 - 36 = h^2$ followed by $\sqrt{64} = \sqrt{h^2} \Rightarrow h = 8$.

Core Maths

The Level 3 Core Maths qualification is designed to give students essential problem-solving and quantitative skills. Equal in size and UCAS tariff points to an AS Level, they are aimed at students who aren't studying AS or A Level Maths but need mathematical skills to support their other Level 3 subjects and for future study and employment.

Core Maths support subjects which need quantitative and statistical skills.

Norwich RDP

The Norwich City FC regional Development Programme is an opportunity for our students to take their football experience to the next level. Professional coaches delivering structured training sessions and the opportunity to represent the school and the programme in a range of different fixtures.

Students will have the opportunity to improve their fitness, game understanding and personal skills in a supportive yet competitive environment.

EPQ

Extended Qualification Project (EPQ)

The Extended Project qualification (EPQ) can provide students with the skills that universities and employers look for and will help them to stand out from the crowd in their future careers. Students can enjoy the freedom of working in their own way as they undertake a project based on a subject they are taking or an area of personal interest.

The Extended Project is entirely flexible in approach as each student is able to tailor their project to fit their individual needs, choices and aspirations.

This qualification prescribes a clear structure comprising of two main parts that are closely intertwined.

Students will produce a portfolio that contains supporting evidence for each of the four assessment objectives, which must include at least one piece of extended written evidence, as well as evidence supporting: project management, research and development of the project, the final outcome(s) and on-going reviews of the project.

Entry requirements

The minimum grades needed to enter our Sixth Form is 5 GCSE's grade 9 – 4. Each subject carries additional entrance criteria as per the table below. The criteria is non- negotiable, using national averages as a guide, students that enter with these grades should achieve a least a D grade at A level. All students should aim to achieve a grade 4 in all of the subjects they are studying at GCSE level.

Subject	Grade Entry
Applied Science	At least 5 GCSE Grade 9 – 4 including English & Maths. Plus a minimum of 10 points in 2 Science Subjects.
Art & Design - Fine Art	At least 5 GCSE Grade 9 – 4 including English, grade 5 in Art or similar subject.
Art & Design - Photography	At least 5 GCSE Grade 9 – 4 to including English, grade 5 in Art or similar subject.
Biology	At least 5 GCSE Grade 9 – 4 to including English, grade 6 in Maths and Science
Business	At least 5 GCSE Grade 9 – 4 to including English and Maths
Chemistry	At least 5 GCSE Grade 9 – 4 to including English, grade 6 in Maths and grade 6 in combined Science and/or Chemistry
Computer Science	At least 5 GCSE Grade 9 – 4 to including maths and science
Drama & Theatre Studies	At least 5 GCSE Grade 9 – 4 to including English and Maths. Grade 4 in drama
Economics	At least 5 GCSE Grade 9 – 4 including English and Maths
English Literature & Language	At least 5 GCSE Grade 9 – 4 including maths, Grade 5 GCSE English
Enviromental Science	At least 5 GCSE Grade 9 – 4 including maths and grade 5 English and Grade 5 in Science
Fashion & Textiles	At least 5 GCSE Grade 9 – 4 to including English, grade 5 in Art or similar subject.

Film	At least 5 GCSE Grade 9 – 4 including maths and grade 5 English
WJEC Food, Science & Nutrition	At least 5 GCSE Grade 9 – 4 to including Maths. Grade 4 in a technology based subject
Further Maths	7 At least 5 GCSE Grade 9 – 4 to including English, grade 7 in Maths
Geography	At least 5 GCSE Grade 9 – 4 to include English and Maths and grade 5 in Geography
Health & Social Care	At least 5 GCSE Grade 9 – 4 including maths grade 5 and grade 5 English
History	At least 5 GCSE grades 9 – 4 including maths and Grade 5 in History and English
Mathematics	At least 5 GCSE Grade 9 – 4 to including English, grade 6 in Maths
Media	At least 5 GCSE Grade 9 – 4 including maths and grade 5 English
Music	At least 5 GCSE Grade 9 – 4 to including English and Maths. Grade 5 in music and play an instrument or voice to grade 4
Physics	At least 5 GCSE Grade 9 – 4 including Maths. Grade 6 in Science and maths
Politics	At least 5 GCSE Grade 9 – 4 including maths and grade 5 English
Product Design	At least 5 GCSE Grade 9 – 4 to including Maths. Grade 4 in a technology based subject
Psychology	At least 5 GCSE Grade 9 – 4 including maths grade 5 and grade 5 English
Religious Studies	At least 5 GCSE Grade 9 – 4 including maths and grade 5 English
Sociology	At least 5 GCSE Grade 9 – 4 including maths grade 5 and grade 5 English
Sport & Physical Activity	At least 5 GCSE Grade 9 – 4 including maths and English.

“The sense of community and cohesion within the sixth form is driven to an extent by the activities and events we do together such as dress up days and bake sales. Everyone is friendly and approachable.”

Notes

A large, empty rectangular box with a thin black border, intended for taking notes. It occupies the central portion of the page.

"The sense of community and cohesion within the sixth form is driven to an extent by the activities and events we do together such as dress up days and bake sales. Everyone is friendly and approachable."

Name:

Subject 1:

Subject 2:

Subject 3:

Reserve:

Enrichment:

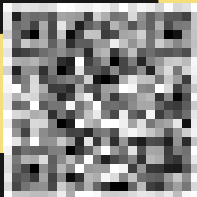
EPQ

Core Maths

Norwich RDP

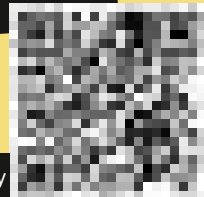
Visit our website

stratton.live/sixth



Apply Online

stratton.live/sixthapply



Next Steps

1 Visit our website stratton.school Start thinking about your option choices

2 Attend our options evening. 7th November 2024

3 Use our Options Guidance Information Booklet to help with your choices.

6 March / April Prepare for your GCSEs and keep up to date with the Stratton Sixth Form via our website.

5 January/February Interview process if needed. Offer letters issued.

4 Complete your online application by 14th January 2025 This will form the basis of your guidance meeting.

7 May /June Deadline for replies accepting your place.

8 July 2025 Attend your Sixth Form induction day. Details of any bridging courses will be confirmed.

9 August 2025 Collect your GCSE results and sixth form letter confirming the courses you have been offered.

Offers of places will be made following interviews in Jan/Feb. All offers will be subject to GCSE results and will therefore be confirmed in August following the publication of exam results, or following entry interviews in September.

September 2025 Interviews and enrolment. Courses start.

Where are we?

Stratton Upper School is situated in Biggleswade, Bedfordshire. The town has good transport links along the A1, main bus routes and via the Biggleswade railway station on the East Coast Main Line.

Eagle Farm Road, Biggleswade, Bedfordshire, SG18 8JB

sixthform@stratton.school

01767 220000

www.stratton.school

strattonschool

strattonschool

strattonschool



Matt King
Sixth Form

We belong at Stratton
where every individual is
known, valued, and supported.



Be Kind

Be Engaged

Be Ambitious

Please do not hesitate to contact
us if you have any questions.

sixthform@stratton.school